

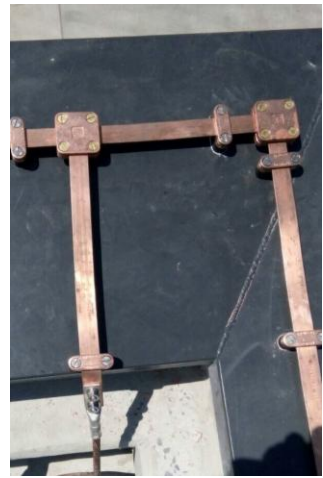
# Bynimble

“Professional's Experience”



## LIGHTNING PROTECTION SYSTEM

**n III s**  
nimble Supply & Service Co., Ltd.



**n II s**  
nimble Supply & Service Co., Ltd.



## **CONTENT**

<b>DETAIL</b>	<b>PAGE</b>
Air Terminal	1
Tape Saddle	2
Adjustable Saddle For Cable	3
Adjustable Saddle For Tape	4
Cable Support	5
Tape Support	6
Square Tape Support	7
Cable To Tape	8
Bi-Metallic Connector	9
Polypropylene Support	10
Stainless Steel Bolt	11
Galvanized Steel Plate	12
Metal Sheet Clamp	13
Copper Bond Ground Rod	14
Ground Rod To Cable Clamp	15
Pipe To Cable Clamp	16
Earth Point	17
Ground Bar Pit	18
Ground Test Box PVC (Out Door Type)	19
Concrete Inspection Pit	20
Copper Tape	21
Aluminium Tape	22
Bare Copper	23
Bare Aluminium	24
Exothermic Welding One Time Ceramic Mould With Powder	25
Graphite Moulds	28

## APPLICATION

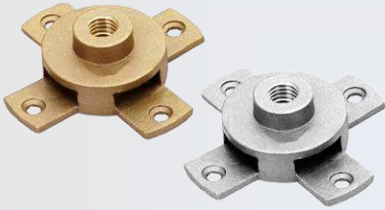
Copper air terminals and aluminium air terminals suitable for lightning protection network.

## MATERIAL

Copper  
Aluminium

## AIR TERMINAL

Code No.	Rod Dia' (in.)	Thread Dia' (mm.)	Rod Length (mm.)	Material
AT-30	5/8	15	300	Copper
AT-60	5/8	15	600	Copper
AT-100	5/8	15	1000	Copper
AT-150	5/8	15	1500	Copper
AT-200	5/8	15	2000	Copper
AT-30A	5/8	15	300	Aluminium
AT-60A	5/8	15	600	Aluminium
AT-100A	5/8	15	1000	Aluminium
AT-150A	5/8	15	1500	Aluminium
AT-200A	5/8	15	2000	Aluminium



## TAPE SADDLE

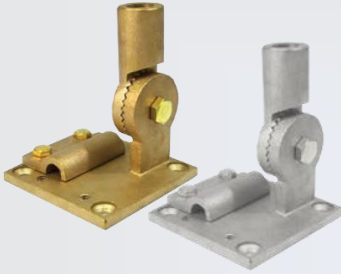
### APPLICATION

Tape saddle are copper alloy or aluminium alloy suitable for use with an air rod fixes onto the roof network of the lightning protection system connecting the cable to the air rod.

### MATERIAL

Copper Alloy  
Aluminium Alloy

Code No.	Threaded Size (in.)	Tape Size (mm.)	Material
TS-58253	5/8	25×3	Copper Alloy
TS-58254	5/8	25×4	Copper Alloy
TS-34253	3/4	25×3	Copper Alloy
TS-34254	3/4	25×4	Copper Alloy
TS-58253A	5/8	25×3	Aluminium Alloy
TS-58254A	5/8	25×4	Aluminium Alloy
TS-34253A	3/4	25×3	Aluminium Alloy
TS-34254A	3/4	25×4	Aluminium Alloy



## APPLICATION

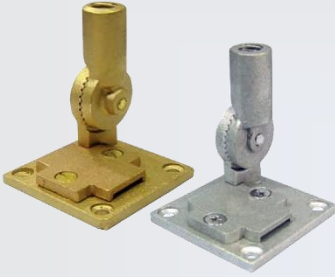
Adjustable saddles are suitable for use with an air rod fixed onto the roof network of the lightning protection system connecting the cable to the air rod.

## MATERIAL

Copper Alloy  
Aluminium Alloy

## ADJUSTABLE SADDLE FOR CABLE

Code No.	Threaded Size (in.)	Cable Size (sq.mm.)	Material
ASC-5870	5/8	50-70	Copper Alloy
ASC-3470	3/4	50-70	Copper Alloy
ASC-5870A	5/8	50-70	Aluminium Alloy
ASC-3470A	3/4	50-70	Aluminium Alloy



## APPLICATION

Adjustable saddles are suitable for use with an air rod fixed onto the roof network of the lightning protection system connecting the tape to the air rod.

## MATERIAL

Copper Alloy  
Aluminium Alloy

## ADJUSTABLE SADDLE FOR TAPE

Code No.	Threaded Size (in.)	Tape Size (mm.)	Material
AST-58253	5/8	25×3	Copper Alloy
AST-58254	5/8	25×4	Copper Alloy
AST-34253	3/4	25×3	Copper Alloy
AST-34254	3/4	25×4	Copper Alloy
AST-58253A	5/8	25×3	Aluminium Alloy
AST-58254A	5/8	25×4	Aluminium Alloy
AST-34253A	3/4	25×3	Aluminium Alloy
AST-34254A	3/4	25×4	Aluminium Alloy



**CABLE SUPPORT**

## APPLICATION

Cable support are copper alloy or aluminium alloy for used secures the conductor to the wall surface of construction.

## MATERIAL

Copper Alloy  
Aluminium Alloy  
Screw – Stainless Steel 304, Brass

Code No.	Cable Size (sq.mm.)	Material
CS-70	50 - 70	Copper Alloy
CS-70A	50 - 70	Aluminium Alloy





## APPLICATION

Fix copper tape or aluminium tape conductors.

## MATERIAL

Copper Alloy  
Aluminium Alloy  
Screw – Stainless Steel 304, Brass

## TAPE SUPPORT

Code No.	Tape Size (mm.)	Material
TS-253	25×3	Copper Alloy
TS-254	25×4	Copper Alloy
TS-253A	25×3	Aluminium Alloy
TS-254A	25×4	Aluminium Alloy



## APPLICATION

Fix copper tape or aluminium tape conductors.

## MATERIAL

Copper Alloy  
Aluminium Alloy  
Screw – Stainless Steel 304, Brass

## SQUARE TAPE SUPPORT

Code No.	Tape Size (mm.)	Material
STS-253	25×3	Copper Alloy
STS-254	25×4	Copper Alloy
STS-253A	25×3	Aluminium Alloy
STS-254A	25×4	Aluminium Alloy



## CABLE TO TAPE

## APPLICATION

Cable to tape used to joint cable conductor with the tape conductor or cable conductor to down conductor for connector for lightning protection system.

## MATERIAL

Copper Alloy  
Aluminium Alloy  
Screw – Stainless Steel 304, Brass

Code No.	Tape Size (mm.)	Cable Size (sq.mm.)	Material
CTT-25370	25 × 3	35 - 70	Copper Alloy
CTT-253120	25 × 3	95 - 120	Copper Alloy
CTT-25470	25 × 4	35 - 70	Copper Alloy
CTT-254120	25 × 4	95 - 120	Copper Alloy
CTT-25370A	25 × 3	35 - 70	Aluminium Alloy
CTT-25470A	25 × 4	35 - 70	Aluminium Alloy



## APPLICATION

For joining aluminium to copper. Particularly useful where an aluminium lightning protection system needs to be earthed using copper.

## BI-METALLIC CONNECTOR

## MATERIAL

Copper , Aluminium

Code No.	Size (mm.)
BiM-80	Length 80 mm.
BiM-M6	Bi-Metallic Washer M6
BiM-M8	Bi-Metallic Washer M8
BiM-M10	Bi-Metallic Washer M10
BiM-M12	Bi-Metallic Washer M12
BiM-M16	Bi-Metallic Washer M16



## APPLICATION

Use as an insulator to support equipment.

## MATERIAL

Polypropylene (PP)  
High grade and uv stabilized

## POLYPROPYLENE SUPPORT

Code No.	Color	Material	Weight/100 pcs.
PPS-Bk	Black	Polypropylene	2.50
PPS-Wh	White	Polypropylene	2.50

Note : Special color can be requested min 2,000 pcs.



SSB-1458



SSB-20M5



SSB-FN

## APPLICATION

Using with -Cable Support  
-Tape Support  
-Square Tape Support  
-Polypropylene Support  
-Metal Sheet Clamp  
-Tape Saddle  
-Adjustable Saddle  
-Cable to Tape

## STAINLESS STEEL BOLT

## MATERIAL

Stainless Steel 304

Code No.	Description
SSB-1458	Stainless Steel Bolt Taper Head Size 1/4" × 5/8"
SSB-20M5	Stainless Steel Bolt Size M5×20 mm
SSB-FN	Stainless Steel Flange Nut



## APPLICATION

Using with adjustable saddle and tape saddle.

## MATERIAL

Hot Dip Galvanized Steel

## GALVANIZED STEEL PLATE (FOR SADDLE)

Code No.	Dimensions (mm.)			Using With
	L	W	H	
GSP-ASG	153	126	2	Adjustable Saddle
GSP-TSG	153	126	2	Tape Saddle

## METAL SHEET CLAMP



MSC-A-S5



MSC-R



MSC-A-L10



MSC-O-L6



MSC-O-S6



MSC-A-L5

Code No.	Material
MSC-R	Stainless Steel 304
MSC-A-S5	Stainless Steel 304
MSC-A-L5	Stainless Steel 304
MSC-A-L10	Stainless Steel 304
MSC-O-S6	Stainless Steel 304
MSC-O-L6	Stainless Steel 304

\* No effect to roof structure : Puncture



## COPPER BOND GROUND ROD

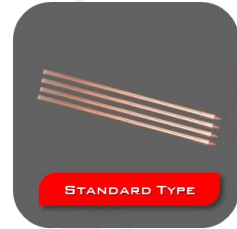
Ground rod copper bonded are made by molecularly bonding pure electrolytic copper onto a low carbon high tensile steel cores.

- High resistance to corrosion
- Stop corrosion, while providing the lowest possible resistance to ground
- Copper Jacket : Standard copper clad thickness not less than 254 Micron
- Bending : There shall be no evidence of cracking of the jacket.

They are made by copper high conductivity and low carbon steel core. Last longer drive easier and will not crack.

### STANDARD SERIES

Code No.	Type	Rod Dia' (inch)	Rod Length (Ft.)
GRS-58S	Standard	5/8	10
GRS-34S	Standard	3/4	10
GRS-58T	Thread	5/8	10
GRS-34T	Thread	3/4	10



### UL SERIES

Code No.	Type	Rod Dia' (in.)	Rod Length (Ft.)
GRUL-58S	Standard	5/8	10
GRUL-34S	Standard	3/4	10
GRUL-58T	Thread	5/8	10
GRUL-34T	Thread	3/4	10



### COUPLING

Code No.	Rod Dia' (in.)
GRC-58T	5/8
GRC-34T	3/4





## APPLICATION

Clamp ground rod parallel to cable conductor.

## MATERIAL

Copper Alloy  
U Bolt, Nut - Brass

## GROUND ROD TO CABLE CLAMP

Code No.	Rod Dia' (inch)	Cable Size (sq.mm.)
GTC-5895	5/8	16 - 95
GTC-58185	5/8	70-185
GTC-3470	3/4	16-70
GTC-34150	3/4	70-150



## APPLICATION

Clamp pipe parallel to one cable.

## MATERIAL

Copper Alloy  
U Bolt, Nut - Brass

## PIPE TO CABLE CLAMP

Code No.	Pipe Dia' (inch)	Cable Size (sq.mm.)
PTC-70	1 ¼ -1 ½	16 - 70
PTC-120	1 ¼ -1 ½	70 - 120



## APPLICATION

Connect rebar to earth point.

## MATERIAL

Copper Alloy

## EARTH POINT

Code No.	No. of Hole	Length (mm.)	Plate Size (mm.)	
			L	W
EP-1	1	75	38	38
EP-2	2	75	70	35
EP-4	4	75	65	65



## GROUND BAR PIT

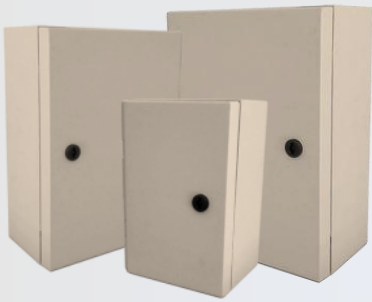
### APPLICATION

Suitable for testing point in grounding system to separate connections with another inspection pit without welding.

### MATERIAL

Copper

Code No.	Hole Dia' (mm.)	No. of Terminals
GBP-105	10	5
GBP-107	10	7



## APPLICATION

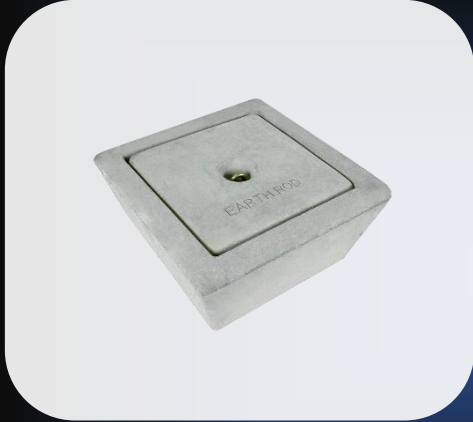
PVC ground test boxes are case pvc with connection bar. Suitable for inspection and testing point for grounding system.

## MATERIAL

PVC : Polyvinyl Chloride

## GROUND TEST BOX PVC (OUT DOOR TYPE)

Code No.	Dimensions (mm.)			Material
	L	W	H	
GTB-S	310	210	170	PVC
GTB-M	410	310	170	PVC
GTB-L	510	410	230	PVC



## APPLICATION

Use for inspection and testing point in grounding system.

## MATERIAL

Concrete

## CONCRETE INSPECTION PIT

Code No.	Dimensions (mm.)			Weight (kg)	Load (kg)
	L	W	H		
CIP-320	320	320	190	25.7	6,000 kg



**COPPER TAPE**

## APPLICATION

Used for conductor on lightning protection system. The copper is annealed for ease of use and has radiused edges.

## MATERIAL

Copper

Code No.	Size (mm.)
CT-253	25×3
CT-254	25×4





ALUMINIUM TAPE

## APPLICATION

Used for conductor on lightning protection system. The Aluminium is annealed for ease of use and has radiused edges.

## MATERIAL

Aluminium

Code No.	Size (mm.)
AT-253A	25×3
AT-254A	25×4



## APPLICATION

Used for conductor on lightning protection system.

## MATERIAL

Copper

## BARE COPPER

Code No.	Cable Size (sq.mm.)
BC-50	50
BC-70	70
BC-95	95
BC-120	120



## APPLICATION

Used for conductor on lightning protection system.

## MATERIAL

Aluminium

## BARE ALUMINIUM

Code No.	Cable Size (sq.mm.)
BA-50A	50
BA-70A	70
BA-95A	95
BA-120A	120

## EXOTHERMIC WELDING ONE TIME CERAMIC MOULD WITH POWDER

Exothermic Welding One Time Ceramic Mould With Powder is method to make permanent connections between end to end between ground rods and cable or cable to cable or cable to bar in various ways for electrical and telecommunication systems.

One time Unit  
(One Way Cable to Rod)



One time Unit  
(Two Way Cable to Rod)



Code No.	Cable Size (Sq.mm.)	Rod Size (inch)
OT1-16R	16	5/8 , 3/4
OT1-35R	35	
OT1-50R	50	
OT1-70R	70	
OT1-95R	95	
OT1-120R	120	
OT1-150R	150	
OT1-185R	185	
OT1-240R	240	
OT1-300R	300	

Code No.	Cable Size (Sq.mm.)	Rod Size (inch)
OT2-16R	16	5/8 , 3/4
OT2-35R	35	
OT2-50R	50	
OT2-70R	70	
OT2-95R	95	
OT2-120R	120	
OT2-150R	150	
OT2-185R	185	
OT2-240R	240	
OT2-300R	300	

## EXOTHERMIC WELDING ONE TIME CERAMIC MOULD WITH POWDER

Exothermic Welding One Time Ceramic Mould With Powder is method to make permanent connections between end to end between ground rods and cable or cable to cable or cable to bar in various ways for electrical and telecommunication systems.

One time Unit  
(Three Way Cable to Rod )



One time Unit  
(Four Way Cable to Rod )



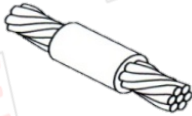
Code No.	Cable Size (Sq.mm.)	Rod Size (inch)
OT3-16R	16	5/8 , 3/4
OT3-35R	35	
OT3-50R	50	
OT3-70R	70	
OT3-95R	95	
OT3-120R	120	
OT3-150R	150	
OT3-185R	185	
OT3-240R	240	
OT3-300R	300	

Code No.	Cable Size (Sq.mm.)	Rod Size (inch)
OT4-16R	16	5/8 , 3/4
OT4-35R	35	
OT4-50R	50	
OT4-70R	70	
OT4-95R	95	
OT4-120R	120	
OT4-150R	150	
OT4-185R	185	
OT4-240R	240	
OT4-300R	300	

## EXOTHERMIC WELDING ONE TIME CERAMIC MOULD WITH POWDER

Exothermic Welding One Time Ceramic Mould With Powder is method to make permanent connections between end to end between ground rods and cable or cable to cable.

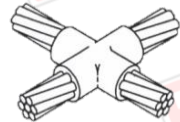
One time Unit  
(Two way Cable)



One time Unit  
(Three way Cable)



One time Unit  
(Four way Cable)



Code No.	Cable Size (Sq.mm.)
OT2-16	16
OT2-35	35
OT2-50	50
OT2-70	70
OT2-95	95
OT2-120	120
OT2-150	150
OT2-185	185
OT2-240	240
OT2-300	300

Code No.	Cable Size (Sq.mm.)
OT3-16	16
OT3-35	35
OT3-50	50
OT3-70	70
OT3-95	95
OT3-120	120
OT3-150	150
OT3-185	185
OT3-240	240
OT3-300	300

Code No.	Cable Size (Sq.mm.)
OT4-16	16
OT4-35	35
OT4-50	50
OT4-70	70
OT4-95	95
OT4-120	120
OT4-150	150
OT4-185	185
OT4-240	240
OT4-300	300



**GRAPHITE MOULD**

## APPLICATION

When making a copper wire connection of Ground rod or other metal connection, place the Welding powder into the graphite mould. Just ignite to start the Welding process. The result will be clean and smooth connection surface. It is also applicable for other metal such as: Iron, Galvanized Steel, Railway track, Cast Iron, Bronze, and Brass.

## MATERIAL

High quality graphite

Code No.	Type of Connection
GM-A	Cable to Cable, Cable to Ground Rod
GM-B	Cable to Steel
GM-C	Bus Bar to Bus Bar
GM-D	Cable to Rebar, Rebar to Rebar

# **Bynimble**

*"Professional's Experience"*

## Contact Us :



**nimble Supply & Service Co., Ltd.**

555/147 Nirvana Park Sukhumvit 77 On Nut Road, Prawet, Prawet, Bangkok 10250



**090-919-2228**



**nimble\_2011@yahoo.co.th**



**www.nimblessco.com**

**www.facebook.com/nimblessco**

